

# MUSIC DEPARTMENT

## MUSIC COURSES CAN BE USED AS ELECTIVE CREDITS

**CONTENT MISSION STATEMENT:** Students will develop musical skills that enable them to be performers, consumers, recognize the value of music as universal communication, and ultimately enrich the quality of life.

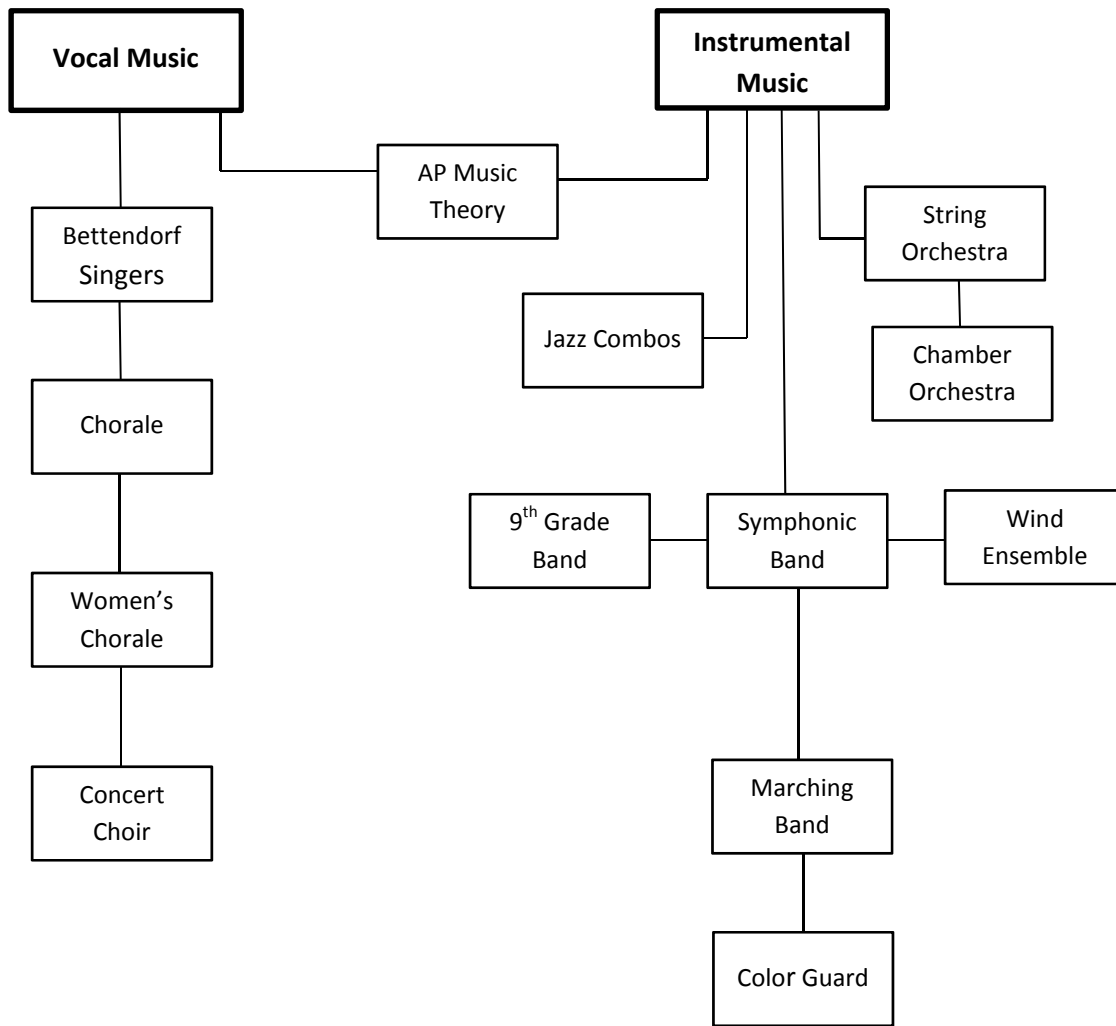
COURSE TITLES	CREDIT	GRADE LEVEL				PREREQUISITE
		9	10	11	12	
<b>INSTRUMENTAL MUSIC</b>						
Jazz Combos	1	x	x	x	x	Current Enrollment in an Instrumental Music Ensemble or Instructor Consent
Color Guard	.5	x	x	x	x	None
A.P. Music Theory	1			x	x	Vocal or Instrumental Music Performance Course
String Orchestra	1	x	x	x	x	None
Chamber Orchestra	1		x	x	x	By Audition
9 <sup>th</sup> Grade Band	1.5	x				Middle School Band or Instructor Approval
Symphonic Band	1.5		x	x	x	9 <sup>th</sup> Grade Band or Instructor Approval
Wind Ensemble	1.5		x	x	x	By Audition
Digital Music	.5	x	x	x	x	None
<b>VOCAL MUSIC</b>						
Concert Choir	1		x	x	x	By Audition
Chorale	1	x	x	x	x	By Audition
Bettendorf Singers	1	x	x	x	x	None
Women's Chorale	1		x	x	x	By Audition

### Content Standards:

The students will:

1. sing alone and with others using a varied repertoire of music.
2. perform on instruments, alone and with others, a varied repertoire of music.
3. read and notate music.
4. listen to, analyze, and describe music.
5. evaluate music and music performance.
6. understand music in relation to history and culture.

# MUSIC SEQUENCE



## INSTRUMENTAL MUSIC COURSE SELECTIONS

### JAZZ COMBOS

112511

**GRADES: 9-12**

**\*PREREQUISITE:** CURRENT ENROLLMENT IN AN INSTRUMENTAL MUSIC ENSEMBLE (SYMPHONY BAND, WIND ENSEMBLE, ORCHESTRA) AND/OR INSTRUCTOR CONSENT

**1 CREDIT  
2 9-WEEK TERMS  
OR 1 SEMESTER**

Jazz Combos is a course which will expose students to all aspects of the jazz genre. Coursework will focus on exploration of practices and conventions in various jazz formats. Cultural and gender aspects in the jazz idiom will be addressed as they relate to composers, artists and history. Students will be actively engaged in the interpretation of varied repertoire and fundamental principles of improvisation will be studied.

#### Benchmarks

The students will:

- explain how the fundamentals of music apply to various jazz styles, articulations and conventions.
- apply knowledge of chord and scale structure to improvisation and accompaniment within a jazz lead sheet.
- interpret varied repertoire in rehearsal and performance.
- analyze jazz literature by examining and analyzing video and audio excerpts, as well as individual performances.
- transpose music for a given instrument for performance with other musicians.
- create a form and arrangement for a piece of standard jazz literature.

### COLOR GUARD

114911

**GRADES: 9-12**

**\*PREREQUISITE:** BY AUDITION (HELD IN EARLY MAY)  
**UNIFORM FEE: \$15.00**

**.5 CREDIT/1 TERM**

Non-instrumental music students may be a member of the color guard in the fall marching band. Membership in the group will be determined by audition. The group performs at all home football games and various other parades/civic functions. Participation in local/regional competitions including the IHSMA State Marching Band Festival are also required. Rehearsals are during the school day, with outside rehearsals scheduled on a weekly basis.

#### Benchmarks

The students will:

- listen to and apply verbal and/or written instructions related to marching band drill and choreography.
- demonstrate competency in various flag, rifle and sabre techniques.
- explain and apply common marching band terminology during rehearsal and performance.
- integrate basic marching techniques and commands into a group performance.
- summarize the IHSMA criteria used for evaluating a marching band performance.

### AP MUSIC THEORY

114111

**GRADES: 11-12**

**\*PREREQUISITE:** VOCAL OR INSTRUMENTAL PERFORMANCE COURSE (2ND SEMESTER)

**1 CREDIT/2 TERMS**

AP Music Theory is designed to develop musical skills that will lead to a thorough understanding of music composition and theory. Classroom activities involve developing proficiency in fundamentals of music that will then be applied to analysis, harmonization, dictation and composition. Students are prepared to take the AP Music Theory Exam when they have completed the course. Students planning to major or minor in music may be able to enroll in an advanced music theory course, depending on individual colleges' AP policies

#### Benchmarks

Upon completion of this course, students will be able to:

- Define basic musical terms and theoretical concepts
- Construct major, minor, chromatic, whole tone and modal scales.
- Demonstrate the ability to construct and analyze major, minor, augmented and diminished intervals and triads.
- Recognize, and sing or play scales, intervals, triads, rhythms and melodies.
- Sing simple conjunct and disjunct diatonic melodies at sight.
- Construct compositions in four part texture.
- Analyze harmonic structure utilizing Roman numerals and figured bass.

- Identify basic form and cadences.
- Describe historical implications and conventions related to music composition.
- Dictate major/minor melodic lines and harmonic progressions.
- Compose a bass line for a given melody.
- Realization of a figured bass and Roman numeral chord progression.

Although the curriculum described in the AP Music Theory Course Description is followed, students are also introduced to other valuable information which is not covered. Other topics include: acoustics, overtone series, transposition, composition and arranging. In addition, the application of various music notation and recording software will also be employed.

**STRING ORCHESTRA**

**112401**

**GRADES: 9-12**

**\*PREREQUISITE: NONE**

**1 CREDITS/4 TERMS**

**UNIFORM FEE: \$15.00**

The fundamentals of performance on an orchestral string instrument are the main focus of the class. A number of outside performances and school concerts will take place. Additional performance opportunities may include: Musical Pit Orchestra, State Solo & Ensemble Festival, various honors orchestras and concerts out in the community. Each student will receive a private or group lesson once every two weeks. Students have the opportunity to participate in extracurricular music ensembles by either placement or audition.

**Benchmarks**

The students will:

- recognize and demonstrate proper rehearsal etiquette through listening and applying verbal and/or written instructions.
- read, identify and perform musical notes from sheet music on an orchestral strings instrument.
- learn to listen, analyze and describe orchestral music.
- build a musical vocabulary.
- learn to evaluate music and musical performances.
- understand relationships between music, other arts and disciplines.
- perform concerts during the school year.
- recognize and understand common music theory and terminology.

**CHAMBER ORCHESTRA**

**113401**

**GRADES: 10-12**

**\*PREREQUISITE: BY AUDITION**

**1 CREDITS/4 TERMS**

**UNIFORM FEE: \$15.00**

This is a select string orchestra of 10-12 grade students. Advance and varied literature is performance to give students a well-rounded musical experience. Advanced students audition for All-State Orchestra in the fall and Solo/Ensemble in the spring. This group has several performances including State Large Group Festival. Each student will receive a private or group lesson once every two weeks. Students have the opportunity to participate in extracurricular music ensembles by either placement or audition.

**Benchmarks**

The students will:

- recognize and demonstrate proper rehearsal etiquette through listening and applying verbal and/or written instructions.
- read, identify and perform musical notes from sheet music on an orchestral strings instrument.
- learn to listen, analyze and describe orchestral music
- demonstrates competency on his/her instrument through performances of all major scales
- learn to evaluate music and musical performances.
- recognize and understand common music theory and terminology.
- analyze stylistic differences in music.

**9<sup>TH</sup> GRADE BAND**

**112221**

**GRADES: 9**

**\*PREREQUISITE: Middle School Band or Instructor Approval**

**1.5 CREDITS/3 TERMS**

**UNIFORM FEE: \$15.00**

The Music Department offers 9<sup>th</sup> Grade Band for the study and performance of quality band music. Class activities emphasize the development of instrument technique, tone production, tuning, fundamentals of music theory, music reading, and listening skills. This ensemble is the first step in sequence for band students at BHS. Members participate in a variety of musical activities including concert work, marching and solo/ensemble

literature. Each student will receive both individual and class based instruction. Students who utilize a District owned instrument will be subject to an annual maintenance fee. Students have the opportunity to participate in extracurricular music ensembles by either placement or audition.

#### Benchmarks

The students will:

- recognize and demonstrate proper rehearsal etiquette through listen and application of verbal and non-verbal instructions.
- list and apply 3 levels of listening during rehearsals and performance
- demonstrate competency of pitch and rhythmic accuracy on their instrument equivalent to grade level music being performed.
- recognize, define and apply common music terminology in the music being performed
- demonstrate an understanding and competence in rhythm reading and tonal production on their instrument.
- identify and apply stylistic differences in music related to dynamics, articulation, etc.

#### **SYMPHONIC BAND**

**112211**

**GRADES: 9-10**

**1.5 CREDITS/3 TERMS**

**\*PREREQUISITE: 9<sup>th</sup> Grade Band or Instructor Approval**

**UNIFORM FEE: \$15.00**

Symphonic Band is for students needing further development of basic music skills. The band is a continuation of the district band program. Members participate in a variety of musical experiences including concert work, marching, and participate in the State Solo/Ensemble Festival, as well as the State Large Group Festival. Each student will receive a private or group lesson once every two weeks. All band students are members of the Marching Band. Students using a District owned instrument will be charged an annual maintenance fee. Students have the opportunity to participate in extracurricular music ensembles by either placement or audition.

#### Benchmarks

The students will:

- recognize and demonstrate proper rehearsal etiquette through listening and applying verbal and/or written instructions.
- lists and applies three levels of listening during rehearsal and performance.
- demonstrates facility on the chromatic scale over the full range of their instrument and recognizes application in music.
- demonstrates facility on major scales through 5 sharps and 5 flats and recognizes application in music.
- recognition, definition, and application of common music terminology.
- demonstrates understanding of rhythm and tonality during sight reading.
- identifies stylistic differences of period music.

#### **WIND ENSEMBLE**

**112201**

**GRADES: 11-12**

**1.5 CREDITS/3 TERMS**

**\*PREREQUISITE: BY AUDITION**

**UNIFORM FEE: \$15.00**

This is a select band of 10-12 grade students. Advanced music is played, and a variety of music is performed to give the students a well-rounded musical experience. Advanced students try out for All-State Band or Orchestra in the fall and Solo/Ensemble Festival in the spring, as well as compete in the State Large Group Festival. All band students are in the Marching Band. Each student will receive a private or group lesson once every two weeks. Students must audition to gain membership into this group. Students using a District owned instrument will be charged an annual maintenance fee. Students have the opportunity to participate in extracurricular music ensembles by either placement or audition.

#### Benchmarks

The students will:

- demonstrate mature rehearsal techniques and habits.
- recognizes and demonstrates proper rehearsal etiquette through listening and applying verbal and/or written instructions.
- perform appropriate tonal control on their individual instruments.
- apply the use of dynamic control, correct articulation, and musical style to musical selections for rehearsal and performance.
- recognize and understand common music terminology.
- analyze stylistic differences of period music.
- demonstrate competency on his/her instrument through performance of all major scales and chromatic scale through the practical range of their instrument.
- identify, define and apply notation of all interpretative symbols in music studied.
- perform attacks/releases, dynamic and stylistic interpretations of the conductor.
- listen to and apply verbal and/or written instructions related to marching band drill and choreography.
- integrate basic marching techniques and commands into a group performance.
- summarize the IHSMA criteria used for evaluating a marching band performance.

**DIGITAL MUSIC****113511****GRADES: 9-12****\*PREREQUISITE: NONE****.5 CREDIT/1 TERM**

Digital Music is a one quarter (9 week) elective course offered by the music department to students in grades nine through twelve at Bettendorf High School. The program is designed to broaden the arts education opportunities of students, to offer musical experiences beyond those of the traditional performing ensembles, and to provide students with real-world applications of technologies currently in use in the music industry. The course content is linked to NAFME arts standards, and has an emphasis on the materials and methods of technical production.

**Benchmarks**

The students will:

- develop understanding of music and the technology used to create music
- expose student to equipment and techniques used in sound reinforcement and recording of music.
- compose and record original music using various digital means.
- analyze & perform electronic music of various styles.
- linking visual activity with sound production

<b>VOCAL MUSIC COURSE SELECTIONS</b>
--------------------------------------

**BETTENDORF SINGERS****113001****GRADES: 9-12****\*PREREQUISITE: NONE****1 CREDITS/YEAR LONG****UNIFORM USAGE FEE: \$15.00**

Bettendorf Singers is an entry level option for 9th grade students as well as students needing further development in basic vocal music skills. Students should be able to match pitch. At least four concerts are given per year. Bettendorf Singers members may participate in Solo and Ensemble Contest, Large Group Contest, and many other music activities. Students have the opportunity to participate in extracurricular music ensembles by either placement or audition. Students have the opportunity to participate in extracurricular music ensembles by either placement or audition.

**Benchmarks**

The students will:

- demonstrate correct vocal technique.
- demonstrate correct breath support.
- apply accurate vowel production to create proper tone.
- demonstrate proper voice placement.
- learn and practice care of the voice.
- perform a large variety of musical styles with an emphasis on multi-cultural diversity.
- demonstrate the ability to make changes in intonation through vowel modification.
- demonstrate independence while singing 4-8 part music in a chorus.
- demonstrate the knowledge of musical lines and phrases.
- apply the use of dynamics and expression.
- sight-read musical samples.
- demonstrate proper concert etiquette both as a performer and an audience participant.

**CHORALE****115002****GRADES: 9-12****\*PREREQUISITE: BY AUDITION****1 CREDITS/YEAR LONG****UNIFORM USAGE FEE: \$15.00**

Chorale is an auditioned choral option for 9th grade students as well as students needing further development in basic vocal music skills. Students should be able to match pitch. At least four concerts are given per year. Students will also be expected to come to lessons throughout each quarter. Members of Chorale may participate in Solo and Ensemble Contest, Large Group Contest, and many other music activities. Students have the opportunity to participate in extracurricular music ensembles by either placement or audition.

**Benchmarks**

The students will:

- demonstrate correct vocal technique.
- demonstrate correct breath support.

- apply accurate vowel production to create proper tone.
- demonstrate proper voice placement.
- learn and practice care of the voice.
- perform a large variety of musical styles with an emphasis on multi-cultural diversity.
- demonstrate the ability to make changes in intonation through vowel modification.
- demonstrate independence while singing 4-8 part music in a chorus.
- demonstrate the knowledge of musical lines and phrases.
- apply the use of dynamics and expression.
- sight-read musical samples.
- demonstrate proper concert etiquette both as a performer and an audience participant.
- demonstrate proper rehearsal skills each day in class

### **CONCERT CHOIR**

**113101**

**GRADES: 10-12**

**\*PREREQUISITE: AUDITION ONLY**

**1 CREDITS/YEAR LONG**

**UNIFORM USAGE FEE: \$15.00**

Concert Choir is an advanced mixed chorus consisting of sophomores, juniors and seniors. Students must audition to be a member of Concert Choir. Instruction in choral techniques and note reading is continued on an advanced level. The Concert Choir has a minimum of four major performances per year, participates in large group contest and many other music activities. Students have the opportunity to participate in extracurricular music ensembles by either placement or audition. Students have the opportunity to participate in extracurricular music ensembles by either placement or audition.

#### **Benchmarks**

The students will:

- demonstrate correct vocal technique.
- demonstrate correct breath support.
- apply accurate vowel production to create proper tone.
- demonstrate proper voice placement.
- learn and practice care of the voice.
- perform a large variety of musical styles with an emphasis on multi-cultural diversity.
- demonstrate the ability to make changes in intonation through vowel modification.
- demonstrate independence while singing 4-8 part music in a chorus.
- demonstrate the knowledge of musical lines and phrases.
- apply the use of dynamics and expression.
- sight-read advanced musical samples.
- demonstrate proper concert etiquette both as a performer and an audience participant.

### **WOMEN'S CHORALE**

**114000**

**GRADES: 10-12**

**\*PREREQUISITE: AUDITION ONLY**

**1 CREDITS/YEAR LONG**

**UNIFORM USAGE FEE: \$20.00**

This course is intended to be for intermediate level women, with Bettendorf Singers being the entry-level ensemble and Concert Choir being the most advanced ensemble. Students in this ensemble would have five major performances every year including Metrofest and IHSMA Large Group. Students have the opportunity to participate in extracurricular music ensembles by either placement or audition. Students have the opportunity to participate in extracurricular music ensembles by either placement or audition.

#### **Benchmarks**

The students will:

- demonstrate correct vocal technique.
- demonstrate correct breath support.
- apply accurate vowel production to create proper tone.
- demonstrate proper voice placement.
- learn and practice care of the voice.
- perform a large variety of musical styles.
- demonstrate the ability to make changes in intonation through vowel modification.
- demonstrate independence while singing 4-8 part music in a chorus.
- demonstrate the knowledge of musical lines and phrases.
- apply the use of dynamics and expression.

- sight-read advanced musical samples.
- demonstrate proper concert etiquette both as a performer and an audience participant.